

Midwest Solutions



Grow your practice with restorative, endodontic and implant capabilities, together in one integrated A-dec® solution.

Expanding your potential just got easier. Now, A-dec+ connectivity makes it possible to integrate the cutting-edge electric performance of Dentsply Sirona's Midwest Motors into your A-dec® Pro delivery. A single motor control module unlocks restorative, endodontic, implant, and apex-locating capabilities, so you're equipped to offer more treatments, attract new patients, and drive practice growth. All with the trusted reliability you expect from A-dec and Dentsply Sirona.

Less complexity. More possibilities.

Replace cluttered tabletop devices and transform your operatory into a streamlined, efficient workspace with one unified system that combines a chair-integrated controller with electric handpieces.

No redundant equipment. No manual adjustments. A single user interface and shared foot control across all procedures simplifies workflow, ensures consistency, and reduces the stress and mental fatigue of switching between devices. You'll enjoy precision control, enhanced efficiency—and countless new possibilities for your practice.



Simplified workflow

Switch seamlessly across restorative, endodontic and implant modes for consistent clinical flow. Customisable presets, file and implant libraries, and on-screen guidance streamline procedures to keep you focused and working in the zone.

Speed without sacrifice

Experience precise torque control and speed every time. Intelligent real-time adjustments and calibration help keep burs, files and drills performing at their best, supporting efficient cutting, confident canal shaping, and predictable implant workflows.

Elegant integration

True plug-and-play compatibility lets you add the Midwest Motor System to any new A-dec 300 Pro and 500 Pro delivery system*, or to retrofit existing A-dec deliveries with minimal downtime.

Connected intelligence

Stay up to date with A-dec+ software enhancements that improve features and your user experience. Library updates ensure your files and workflows evolve as new solutions emerge—maximising your investment and minimising disruption.

**Integrated implantology available only on A-dec 500 Pro (DS7 touchscreen). Integrated apex locator available on A-dec 500 Pro (DS7 touchscreen) and A-dec 300 Pro (DS5 touchscreen).*



Advanced Midwest Endodontics Simplified with A-dec integration

Offer your patients a more holistic approach to their oral health by adding endodontics to your treatment options. A-dec's seamless solution includes an apex locator integrated with the Midwest motor for real-time measurements.

All apex data, file visuals, and live metrics are unified on one intuitive screen. Fewer devices and exposed surfaces also mean faster turnover and disinfection time between patients. So you can focus on care, not cleanup.



T1 Endo 6 L

Lighted handpiece

In combination with the apex locator, allows for localisation of the apex without a file clamp

Extra small head for optimal view of the root canal

2-year Dentsply Sirona warranty



Confidence in real time

Staying in the zone just got easier. Customisable workflows help you stay focused and in control, while A-dec's multifunction foot control capability feels natural and intuitive, for more confidence as you move through procedures.

Any time the Midwest handpiece is returned to the holder, the system automatically activates hand file apex location mode, so you can move effortlessly between motor-driven and handheld files, using a single on-screen interface. No more distractions, or having to look away from the screen while you're working.

- Real-time audio and visual feedback
- Photo-based icons for faster, easier file recognition
- Automatic forward/stop based on apex proximity
- Torque control for improved safety and cutting efficiency
- Built-in reciprocating algorithms reduce risk of file breakage



Get real-time guidance as you approach the apex with clear step tracking and performance metrics. (Interface as shown on A-dec 500 Pro DS7 screen.)



Access WaveOne® and Reciproc™ technologies

Get the full advantage of Dentsply Sirona's most trusted file technologies, integrated into your daily workflow. Intelligent, preset-driven reciprocating systems and onboard apex location remove the guesswork for safer, faster, more predictable root canal treatments.

Specifications

Midwest Endodontic

| Model | Attachment type | Max speed (rpm) | Light | Spray ports | Length (mm) | Head diameter (mm) | Head height (mm) | Weight (grams) |
|-------------|-----------------|-----------------|-------|-------------|-------------|--------------------|------------------|----------------|
| T1 Endo 6 L | Contra-angle | 6,500 | Yes | N/A | 99 | 8,7 | 12,5 | 59 |



Add integrated Midwest implantology with one A-dec solution

Integrated implantology not only allows you to capture additional revenue, it strengthens continuity of care and builds patient trust. Now, instead of referring cases out, you can manage the entire implant workflow—from site preparation to placement—within your own practice.

A-dec gives you the flexibility to add implantology anytime you want, now or in the future, through the existing platform on your A-dec 500 Pro delivery. The plug-and-play Midwest implant motor, sterile tubing pump, and comprehensive implant library are simple to integrate whenever you're ready. No complex installation or extra equipment required.

Implant 20:1 L

- Compact, lightweight design reduces strain on hand, arm and shoulder
- Internal irrigation system delivers cooling fluid directly to the drill shaft
- Saline-resistant stainless steel shaft and gears
- Double LED system for uniform lighting regardless of rotation speed
- Accu-Chuck™ bur-locking and rotation drive mechanism for stability and precision
- Soft Push™ button for quick and comfortable bur release with minimal pressure
- 1-year Dentsply Sirona warranty



Specifications

Midwest Implant

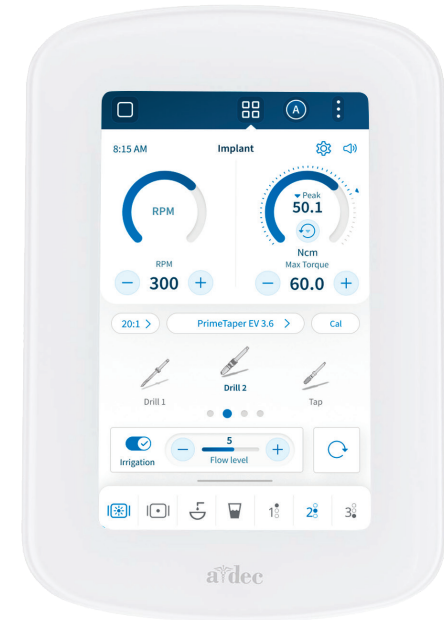
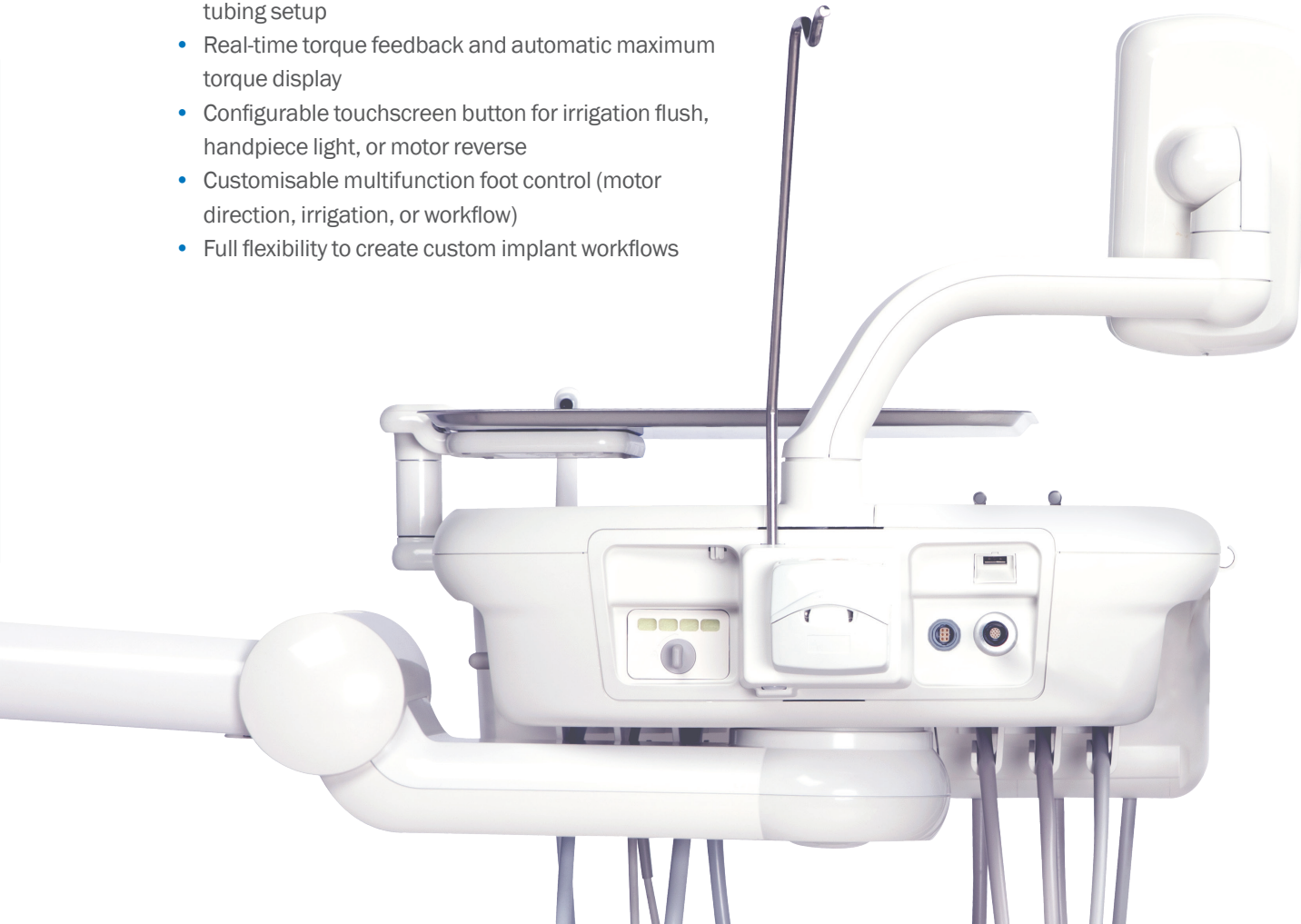
| Model | Attachment type | Max speed (rpm) | Light | Spray ports | Length (mm) | Head diameter (mm) | Head height (mm) | Weight (grams) | A-dec Part No |
|----------------|-----------------|-----------------|-------|-------------|-------------|--------------------|------------------|----------------|---------------|
| Implant 20:1 L | Contra-angle | 2,000 | Yes | 1 (Sterile) | 88 | 9,8 | 13,6 | 78 | 54.1080.00 |

Grow your practice, not your footprint

Bulky tabletop devices and intimidating saline bags on your countertops are a thing of the past. The entire Midwest implant system is integrated into the A-dec 500 Pro delivery system, replacing all the clutter with a seamless solution.

With a common foot control and intuitive, unified interface, every movement feels natural and workflows stay consistent, reducing fatigue while maximising your efficiency. It's a smarter, simpler way to deliver advanced dentistry. All without expanding your footprint.

- Onscreen irrigation rate control with simple sterile tubing setup
- Real-time torque feedback and automatic maximum torque display
- Configurable touchscreen button for irrigation flush, handpiece light, or motor reverse
- Customisable multifunction foot control (motor direction, irrigation, or workflow)
- Full flexibility to create custom implant workflows



Touchscreen shows you real-time RPM, torque, and irrigation monitoring with preset workflows.



Midwest Energo™ Series

Silence nearly perfected

Dentsply Sirona sets new standards with Midwest Energo, one of the quietest 1:5 handpieces they've ever offered. An optimised gear design reduces wear and noise, while the patented 4x2 nozzle spray system mixes chip air and water outside the head to reduce spray noise. The electric motor is designed for smooth, quiet operation, which helps reduce stress for you and your patients.

T1 Energo

- Titanium sleeve
- Lightweight (approx. 58 grams)
- Standard and short options
- Robust steel heads
- Ceramic bearings
- Enhanced illumination
- Integrated water filter
- 3-year Dentsply Sirona warranty

T2 Energo

- Stainless steel sleeve
- Lightweight (approx. 72 grams)
- Robust steel heads
- Ceramic bearings
- Enhanced illumination
- Integrated water filter
- 2-year Dentsply Sirona warranty



Ergonomics redesigned

See everything you want to see with nearly no limits. The Midwest Energo series features a smaller head and improved handshape for excellent sight and precise work. Lightweight and robust, the precise titanium and steel designs result in electric handpieces that are among the lightest in their class.

- Easy-to-grasp grip for comfortable and precise work
- Easy-change burs: less force required to push the button to open the chuck
- Improved fibre optic glass enhances illumination up to 40k Lux for a brighter work area
- Safe Head Technology reduces handpiece temperature to help prevent heat-related risks during procedures
- Diamond-Like-Carbon (DLC) coated ceramic bearings reduce friction and increase durability



Specifications

Midwest T1 Energo

| Types | Color coding | Gear ratio | Speed (rpm) | Length | Head diameter (mm) | Head height (mm) | Equipment | Spray | Indication |
|---------------------|--------------|------------|-------------|--------|--------------------|------------------|-----------|------------------|------------------------------|
| MW T1 Energo 1:5 L | ● | 1:5 | 200,000 | 100 mm | 8.9 mm | 14.04 mm | Ø 1.6 FG | 4*2-nozzle spray | Cavity and crown preparation |
| MW T1 Energo 1:1 L | ● | 1:1 | 40,000 | 100 mm | 8.7 mm | 12.25 mm | Ø 2.35 WB | 1-nozzle spray | Finishing |
| MWT1 Energo S 1:5 L | ● | 1:5 | 200,000 | 91 mm | 8.9 mm | 14.04 mm | Ø 1.6 FG | 4*2-nozzle spray | Cavity and crown preparation |
| MWT1 Energo S 1:1 L | ● | 1:1 | 40,000 | 89 mm | 8.7 mm | 12.25 mm | Ø 2.35 WB | 1-nozzle spray | Finishing |

Midwest T2 Energo

| Types | Color coding | Gear ratio | Speed (rpm) | Length | Head diameter (mm) | Head height (mm) | Equipment | Spray | Indication |
|--------------------|--------------|------------|-------------|--------|--------------------|------------------|-----------|------------------|------------------------------|
| MW T2 Energo 1:5 L | ● | 1:5 | 200,000 | 100 mm | 8.9 mm | 14.04 mm | Ø 1.6 FG | 4*2-nozzle spray | Cavity and crown preparation |
| MW T2 Energo 1:1 L | ● | 1:1 | 40,000 | 100 mm | 8.7 mm | 12.25 mm | Ø 2.35 WB | 1-nozzle spray | Finishing |



Midwest Tradition Pro® Series

Smaller diameter head

Midwest's Tradition Pro handpiece features a smaller diameter head (9.7mm), and a distinctive grip that enhances both comfort and control as you work.

A redesigned turbine with a new rotor and ceramic bearing set offers significantly more power, while Dynamic Speed Control limits excessive free speeds that can generate noise and cause excess bearing wear. Solid glass fibre optics resist yellowing and improve light transmission for better visibility.

Tradition Pro TCF Push Button Coupler End

Up to 20 watts of power

Coupler backend with 4-port water spray

Solid glass fibre optics

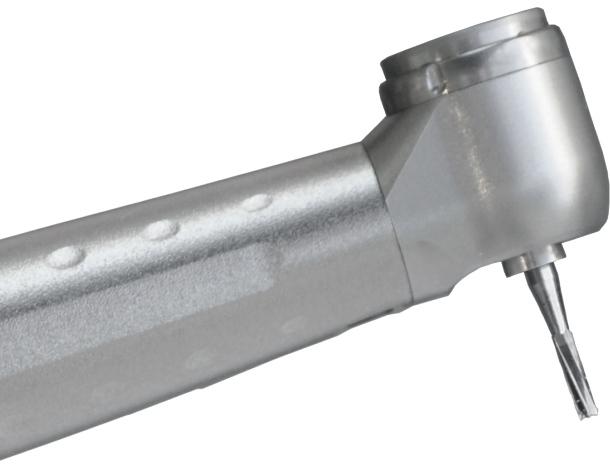
Push button chuck

K-style coupler backend

1-year Dentsply Sirona warranty







Midwest Stylus[®] Plus Series

Performance under pressure

Stay in control with the Midwest Stylus Plus. Dynamic Speed Control in the head limits free speed to protect bearings against excessive RPMs at higher pressures—reducing noise without impacting peak cutting power.

Plus, the patented dimple-and-flat-grip design improves tactile feel, index positioning, and control for more confidence as you work.

Stylus Plus

Computer-balanced rotor and tuned airflow minimise vibration and noise

20 watts of power

Ceramic bearings

4-port water spray

Solid glass fiber optics

K-style coupler backend

2-year Dentsply Sirona warranty

Stylus Plus Mini

Shorter head allows for extended bur projection to help with deeper preparations

20 watts of power

Single-port water spray for powerful debris clearing

K-style coupler backend

2-year Dentsply Sirona warranty



Midwest Phoenix[®] Series

Today's technology for today's materials

Titanium-coated sheaths with a distinctive diamond-pattern grip enhance the tactile feel on the Phoenix series. Inside, Diamond-Like Carbon coated ceramic bearings reduce friction and enhance performance. Tuned air flow in the head manages rotor speed, protecting bearings and limiting noise generation, even at higher psi.



Phoenix

Mini-head in multiple backend configurations

20 watts of power

4-port water spray

Solid glass fibre optics

K-style coupler backend

2-year Dentsply Sirona warranty

Phoenix ZR

Ideal for solid zirconia crown removal and crown prep

Deeper chuck accommodates 25mm length burs

Lower free-speed for reduced sound

23 watts of power

4-port water spray

Solid glass fiber optics

K-style coupler backend

2-year Dentsply Sirona warranty



Specifications

Midwest Tradition

| | Tradition Pro TCF Push Button K-style Backend |
|----------------------|---|
| Watts (approximate) | 20 |
| Sound* | 61 dBa |
| Free Speed* | 410,000 RPM |
| Water Ports | 4 |
| Fiber Optic | Yes |
| Bearing Type | Ceramic |
| Weight | < 55 grams |
| Head Size (Dia x Ht) | 9.7mm x 12.8mm |
| Maximum Bur Length | 21.0 mm |
| Warranty | 1 year |

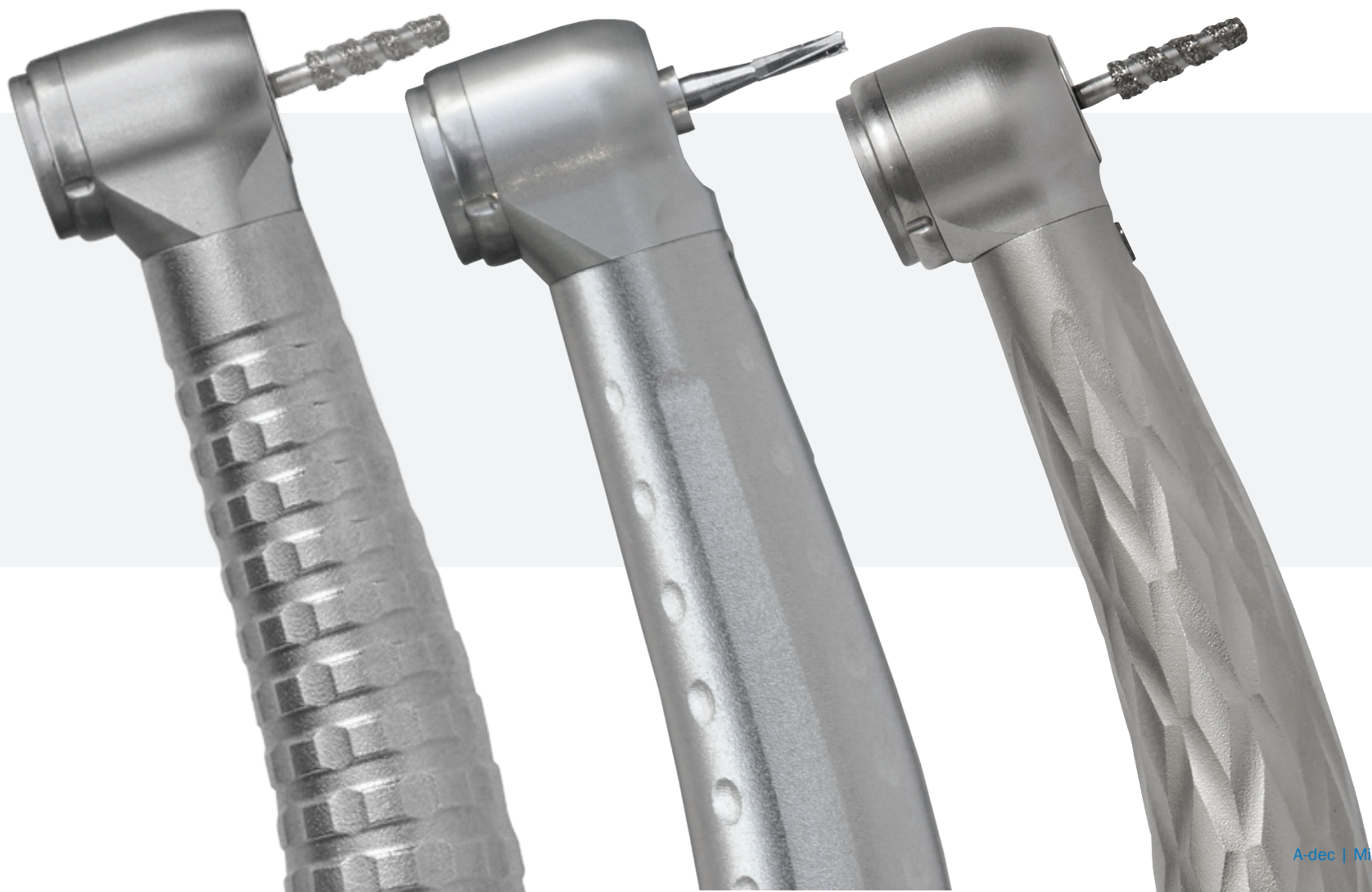
Midwest Stylus Plus

| | Stylus Plus SPK K-style Backend | Stylus Plus Mini K-style Backend |
|----------------------|---------------------------------|----------------------------------|
| Watts (approximate) | 20 | 20 |
| Sound* | 60 dBa | 60 dBa |
| Free Speed* | 410,000 RPM | 410,000 RPM |
| Water Ports | 4 | 1 |
| Fibre Optic | Yes | Yes |
| Bearing Type | Ceramic | Ceramic |
| Weight | < 55 grams | < 55 grams |
| Head Size (Dia x Ht) | 9.7mm x 12.7mm | 9.7mm x 11.8mm** |
| Maximum Bur Length | 21.0 mm | 21.0 mm |
| Warranty | 2 year | 2 year |

Midwest Phoenix

| | Phoenix K-style Backend | Phoenix ZR K-style Backend |
|----------------------|-------------------------|----------------------------|
| Watts (approximate) | 20+ | 23+ |
| Sound* | 59 dBa | 58 dBa |
| Free Speed* | 410,000 RPM | 370,000 RPM |
| Water Ports | 4 | 4 |
| Fibre Optic | Yes | Yes |
| Bearing Type | DLC Ceramic | DLC Ceramic |
| Weight | < 55 grams | < 55 grams |
| Head Size (Dia x Ht) | 9.7mm x 12.7mm | 11.4mm x 12.7mm |
| Maximum Bur Length | 21.0 mm | 25.0 mm |
| Warranty | 2 year | 2 year |

*Approximate values. Free speed and sound measured without water spray. **Excludes bur tube.



Reliable Creative Solutions

FOR DENTAL PROFESSIONALS WORLDWIDE

 @A-decDental

 @A-decDental

 @A-dec Inc.

 @AdecDental

 @A-dec Inc.

A-dec Headquarters

2601 Crestview Drive

Newberg, Oregon 97132 USA

P: 1.800.547.1883 within USA/CAN

P: +1.503.538.7478 outside USA/CAN

a-dec.com

Other Locations

A-dec Nashville Experience Centre

A-dec Australia

A-dec United Kingdom

Not available in all regions. Check with your authorised A-dec dealer for local availability.

Energio™, Tradition®, Stylus®, Phoenix®, Rhino®, Shorty®, Rhino XE™, Nupro RDH®, Automate® and QuietAir® are registered marks of Dentsply Sirona.

The products shown may vary and are subject to change without notice. Contact your authorized A-dec dealer for the most current product information. All trademarks in this document are subject to the trademark rights of A-dec, its affiliates, and their collective suppliers in the United States and foreign countries.

©2026 A-dec Inc. All rights reserved. 85.1100.25/PP/2.2M/2-26/Rev A

